



VISIT OUR WEBSITE • [AGR.GEORGIA.GOV/YELLOW-LEGGED-HORNET](http://AGR.GEORGIA.GOV/YELLOW-LEGGED-HORNET)

## YELLOW-LEGGED LEDGER

GEORGIA DEPARTMENT OF AGRICULTURE • TYLER HARPER, COMMISSIONER

Over the past couple of weeks, the Plant Protection team has not detected any Yellow-legged Hornet (YLH) nests, likely due to cooler temperatures and the time of year. Our team remains committed to monitoring YLH activity year-round and continues to conduct thorough trap searches. We encourage beekeepers who observe hawking behavior or citizens who believe they've seen YLH in their area to report their findings to us at [yellow.legged.hornet@agr.georgia.gov](mailto:yellow.legged.hornet@agr.georgia.gov).

Our team remains dedicated to educating the public about Yellow-legged Hornets and the critical importance of their eradication. This week, David Williams and Cade Houston presented at the National Honey Producers Association Meeting in San Antonio, where they covered all aspects of YLH, from identification to control efforts.



(Photo: American Honey Producers Association)

## UPDATE BY THE NUMBERS

New Traps Deployed: 40

Total traps deployed (August 17, 2023 – December 5, 2024): 1,239

Hornets found (November 21 – December 5, 2024): 225

Nests found & eradicated (November 21 – December 5, 2024): 0

Total nests found & eradicated (August 2023 – December 5, 2024): 51

- January 2024 – December 5, 2024: 4 embryo nests, 3 primary nests, 39 secondary nests
  - Total: 46
- August 2023 - December 2023: 5 secondary nests

## HELPFUL RESOURCES

### How to Report Sightings and Nests:

As always, we are grateful for the public's help in contacting us as soon as they find a nest. We continue to encourage all Georgians to report any hornet sightings or suspected nests by emailing us at [yellow.legged.hornet@agr.georgia.gov](mailto:yellow.legged.hornet@agr.georgia.gov) or using our online reporting [form](#).

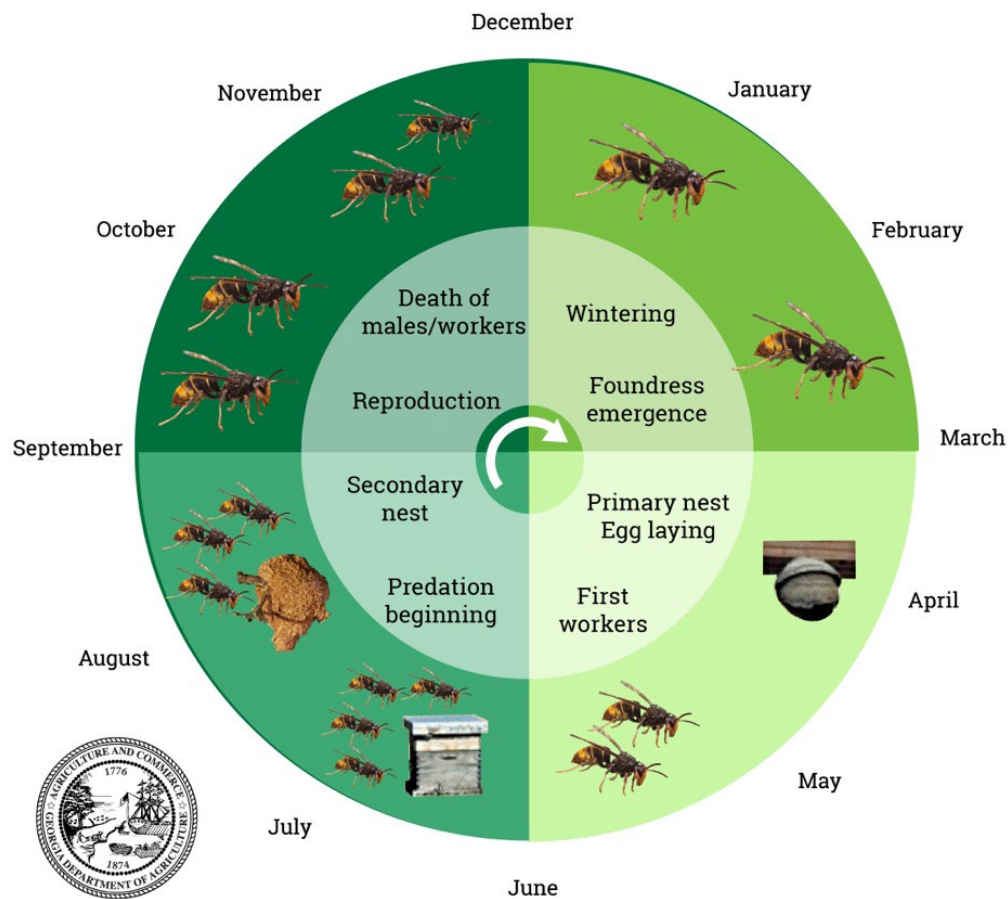


### Terms to Know:

- **Embryo Nests** are built by queens so that they can begin forming a colony and often are the size of a tennis ball. Embryo nests are usually found in early spring.
- **Primary Nests** are nests built by worker hornets once they emerge from embryo nests. They can be the size of a grapefruit. Primary nests are usually found in early summer.
- **Secondary Nests**, the final stage of a hornet colony, are much larger than embryo and primary nests. These nests, often found atop trees and larger than a basketball, were successfully eradicated from the Savannah area in 2023. They typically appear from late summer to fall.

### Yellow-legged Hornet Life Cycle:

Here is a diagram illustrating the life cycle of the yellow-legged hornet. Currently, they are progressing as expected and constructing secondary nests.



Source: Monceau, Karine & Thiery, Denis. (2016). *Vespa velutina*: current situation and perspectives. *Atti della academia nazionale Italiana di Entomologia*.

**Join the Georgia Hornet Watch Facebook Group:**



(Click [here](https://agr.georgia.gov/yellow-legged-hornet) to join.)

---

**We appreciate your assistance in helping us eradicate this serious threat to Georgia's agriculture, our state's number one industry. For more information, visit GDA's Dedicated Yellow-legged Hornet webpage: <https://agr.georgia.gov/yellow-legged-hornet>.**