

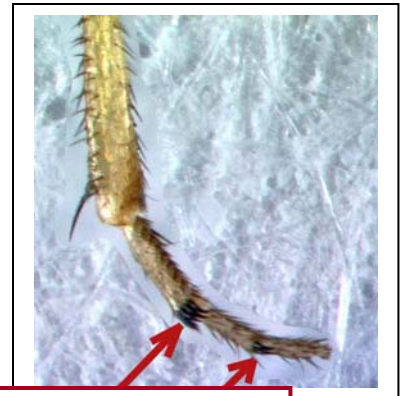
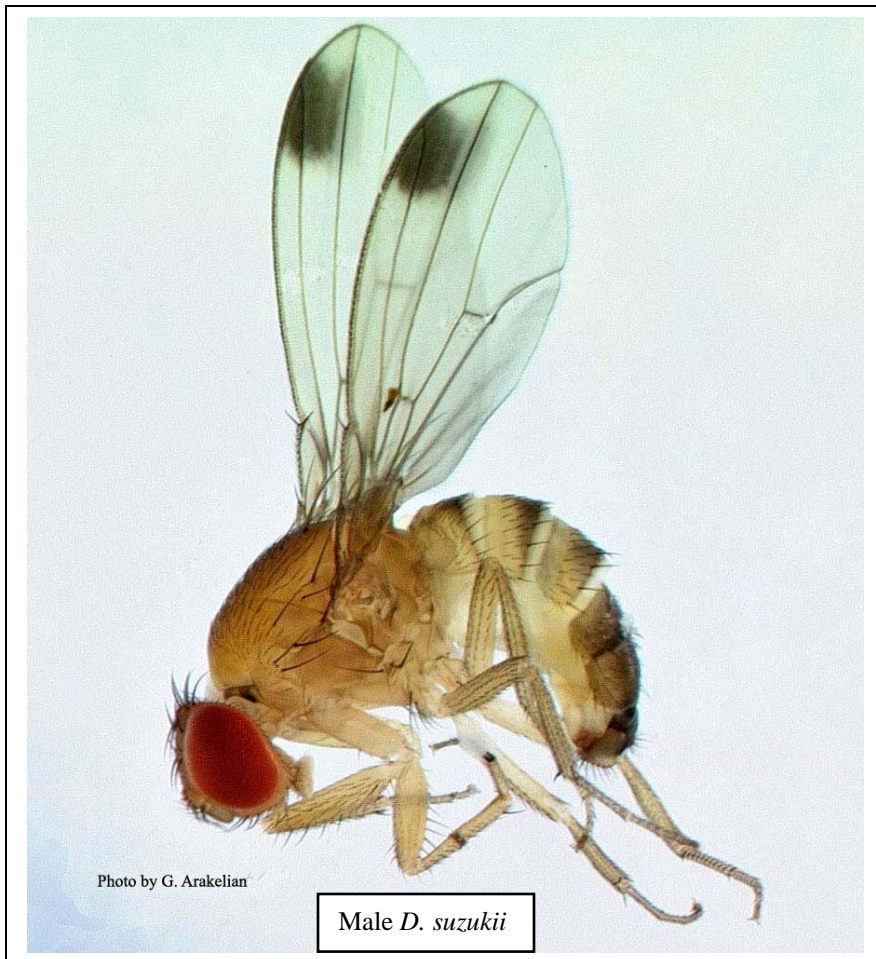
Cherry Vinegar Fly (*Drosophila suzukii*)

Distribution: Occurs in China, Japan, Korea, Spain, and Thailand. In the U.S.: Hawaii and California.

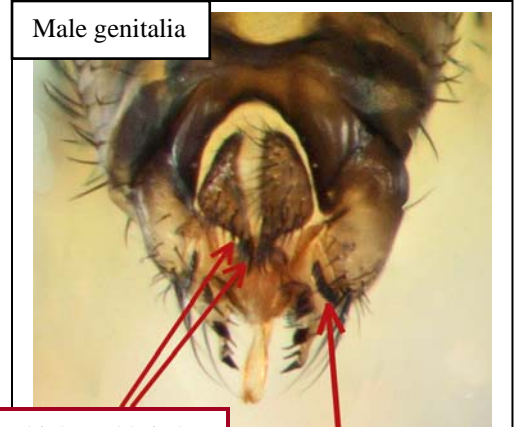
Hosts and Damage: Known to infest fresh, ripe cherries, blueberries, raspberries, and strawberries.

Field ID: Adults are brownish yellow flies with black bands on the abdomen. Eyes are bright red. Male (about 2.6-2.8 mm long) with black spots on wings and two rows of combs on each fore tarsus; genitalia with several stout clasper bristles and thickened bristles on anal plate. Females (about 3.2-3.4 mm long) without tarsal combs and markings on the wings.

Larva (maggot) with white, cylindrical body tapered anteriorly and elevated posterior spiracles.

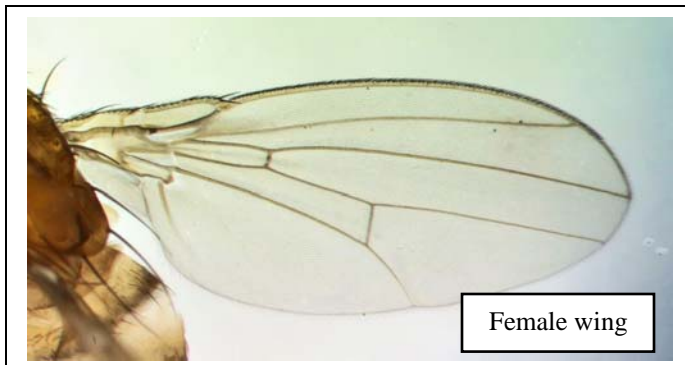


Combs on fore tarsus (male)

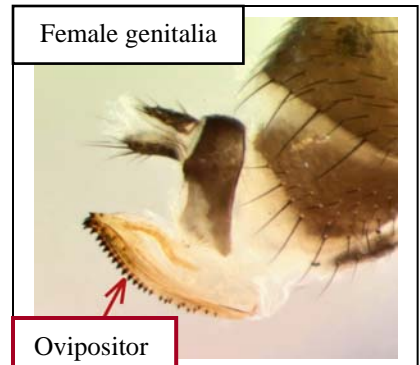


Thickened bristles on anal plate

Stout clasper bristles



Female wing



Ovipositor